

# SPRING 2023

## CLASSES & WORKSHOPS

ADULT & YOUTH SCHEDULE: JANUARY - MAY



envision  
engage  
emerge

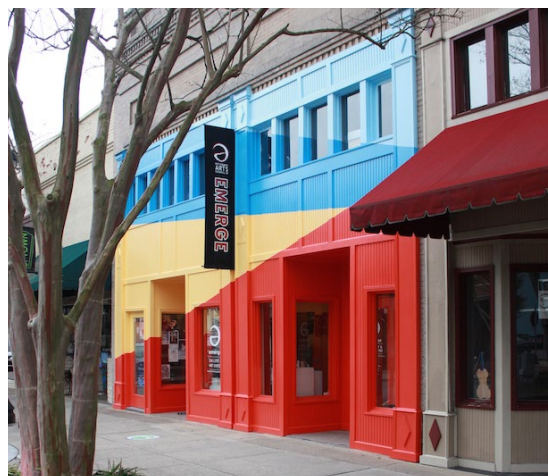


## MISSION STATEMENT:

Emerge Gallery & Art Center is a non-profit organization dedicated to enhancing the quality of life in Pitt County by promoting artists and arts organizations, educating through the arts, and making the arts accessible to the entire community.

## CONTACT US:

404 Evans Street | Greenville, NC 27858  
(252) 551-6947  
info@emergegallery.com | www.emergegallery.com



## Community Outreach

Part of the Emerge Gallery & Art Center's mission is to make the arts accessible to the entire community. For every five paid programs, one is completely free. We do this through art programs geared towards those affected by cancer in the hospital, artist in residency programs, and our Youth Arts Initiative program, which includes scholarships and our Youth Public Arts Project.

**Youth Public Arts Project** is our longest running outreach program. Started in 2005, this is a bi-monthly program, where youth come to Emerge Gallery & Art Center to work with professional artists and musicians to create various public art projects and learn about the rich heritage of African American music. The public art is then displayed throughout the community.

**Art is Good Medicine** is an Arts in Healthcare program in partnership with ECU Health and the McConnell-Raab Hope Lodge. Professional visual artists work with adults in the ECU Health Cancer Center, along with the McConnell-Raab Hope Lodge, and pediatric patients in the Maynard Children's Hospital. In addition, we facilitate free adult workshops at Emerge Gallery & Art Center to individuals living with a health disability or disease, their family, and/or caregivers.

**Scholarships** are available to our community in need to attend classes free of charge.

For more information, please contact Paula Rountree, Programs Director at paula@emergegallery.com.

### GENERAL INFORMATION

Community Outreach PAGE 2

Policies & Procedures PAGE 3

### CLASSES & MORE

Youth Classes PAGE 4

Painting & Drawing Classes PAGE 5

Metal Design & Jewelry Classes PAGE 6

Bookmaking & Printmaking Classes PAGE 7

Pottery Classes PAGE 8-10

Pottery Clubs PAGE 10

Private Lessons & Spring Break Art Camp PAGE 11

Family Workshops PAGE 12

Art is Good Medicine Workshops PAGE 13

Sip, Savor & Create Workshops PAGE 14-15

Registration Form PAGE 16





## Registration Procedures

- You must fill out the registration form completely.
- We do not take phone registrations. Register early as space is limited!
- Registration is available via web, mail, or in person at our facility.
- We offer online registration. Please visit [www.emergegallery.com](http://www.emergegallery.com) for more information.
- Registrations may be mailed or delivered in person to: Emerge Gallery & Art Center, 404 Evans St., Greenville, NC 27858
- Mailed registrations will be recorded by date of receipt.
- Payment may be made by check, cash, or credit card.

## Payment & Refund Policies

- Payments must be made in full. Deposits are not accepted!
- There will be NO refunds (full or partial) after 5 days prior to a class.
- Full refunds are available up to 2 weeks in advance, minus the processing fee of \$20.
- Full refunds must be requested in writing via mail, in person, or via email to [paula@emergegallery.com](mailto:paula@emergegallery.com).
- Partial refunds are available after 2 weeks on a sliding scale up to 5 days prior to class and include the deduction of the processing fee of \$20.
- The scale of what Emerge Gallery & Art Center will retain if a cancellation occurs:
  - 12 - 13 days prior - 10% of enrollment plus the \$20 processing fee
  - 10 - 11 days prior - 20% of enrollment plus the \$20 processing fee
  - 8 - 9 days prior - 30% of enrollment plus the \$20 processing fee
  - 7 days prior - 40% of enrollment plus the \$20 processing fee
  - 6 days prior - 50% of enrollment plus the \$20 processing fee
  - 5 days prior - 60% of enrollment plus the \$20 processing fee
  - After 5 days prior - no refund is given
- In the case of emergency, sickness, or similar events, please contact Paula Rountree at Emerge Gallery & Art Center concerning your situation and request of a refund. Each situation is examined on an individual basis. Decisions are made by the Education Committee.
- In the event of any refund, the Emerge Gallery & Art Center will retain a \$20 processing fee.
- Emerge Gallery & Art Center does not offer makeup classes in any form for classes missed due to no fault of our organization. This includes switching classes or sessions.
- Prior to a session beginning, a request to switch a registration from one session to another will incur a \$10 processing fee.

## Class Guidelines / Accessibility

- All students, instructors, and staff are encouraged to wear a face mask in the classroom.
- We encourage you to dress for mess.
- Emerge Gallery & Art Center will offer a Zoom option for a few of the classes. Students must have their own supplies.
- The in-person class and Zoom class are not interchangeable.
- Emerge Gallery & Art Center asks that if anyone in your household is sick or showing signs of becoming sick, that you do not attend class.
- Individuals requesting accommodation under the Americans with Disabilities Act (ADA) should contact the Programs Director at [paula@emergegallery.com](mailto:paula@emergegallery.com) prior to the start of class.

# Youth Classes

## EMERGING ARTISTS: ART FUNDAMENTALS

Grades 1st - 5th (Children taught at a skill and pace level sufficient for their needs.)

Immerse your young artists in the world of abstraction, using lots of shapes, forms, colors, and lines! Students will be introduced to well known artists, in different abstract mediums, to inspire their own works of art. These mediums will cater towards painting, drawing, sketching, mixed media, but possibly more! [Min. 4, Max. 10]

ALL MATERIALS INCLUDED

**WEDNESDAYS, 4:15pm - 5:45pm**

**Instructor:** Alex Chisler

**Session 1: January 18 – February 22 (6 classes)**

**Reg. Code: AF-97**

**Session 2: March 8 – April 12 (5 classes)**

**Reg. Code: AF-98**

**\*Skipping the week of March 14**

**Session 3: April 26 – May 31 (6 classes)**

**Reg. Code: AF-99**

**Cost (Session 1 and 3):** \$90 for Emerge members, \$130 for non-members

**Cost (Session 2):** \$75 for Emerge members, \$115 for non-members



## ADVANCED YOUTH: EXPLORING THE ARTS

Grades 6th & up (Children taught at a skill and pace level sufficient for their needs.)

Can't decided which medium your child would enjoy the most? Then this Saturday class is for them! Students will explore a wide variety of mediums, including drawing, painting, printmaking, and handbuilding with clay. [Min. 4, Max. 10]

ALL MATERIALS INCLUDED

**SATURDAYS, 1:15pm - 2:45pm**

**Instructor:** TBA

**Session 1: January 21 – February 25 (6 classes)**

**Reg. Code: SAY-97**

**Session 2: March 11 – April 15 (6 classes)**

**Reg. Code: SAY-98**

**Session 3: April 29 – June 3 (6 classes)**

**Reg. Code: SAY-99**

**Cost:** \$90 for Emerge members, \$130 for non-members

**Are you an Emerge Student?**

**Become a Member of Emerge!**

Benefits include discounts on classes and workshops.

*Student/Senior • Individual • Family • Donor • Sponsor • Patron • Benefactor*



# Painting & Drawing

## DAYTIME: INTRO TO PAINTING, DRAWING & MIXED MEDIA

Do you want to learn to paint or draw? Are you interested in working with mixed media? Would you like to perfect your skills? If so, sign up for this fun class! This open studio style class offers fellowship with other artists interested in painting, drawing, and mixed media while collaborating together on great new project ideas. [Min. 4, Max. 10]

Ages 16 and up with special permission.

First day supplies are included. The instructor will provide a supply list at the first class.

**TUESDAYS, 1:00pm - 3:00pm**

**Instructor:** Gail Ritzer

**Session 1: January 17 – February 21 (6 classes)**

**Reg. Code:** PDM-97

**Session 2: March 7 – April 11 (5 classes)**

**Reg. Code:** PDM-98

**\*Skipping the week of March 14**

**Session 3: April 25 – May 30 (6 classes)**

**Reg. Code:** PDM-99

**Cost (Session 1 and 3):** \$90 for Emerge members, \$130 for non-members

**Zoom Class Cost (Session 1 and 3):** \$70 for Emerge members, \$110 for non-members

**Cost (Session 2):** \$75 for Emerge members, \$115 for non-members

**Zoom Class Cost (Session 2):** \$60 for Emerge members, \$100 for non-members

## EVENING: DRAWING & PAINTING

Whether it is watercolor, acrylic, oils, charcoal, or graphite that strikes your fancy, we have the class for you! Our classes are small and taught like several private lessons at once, geared towards your specific interests and subject matter choices. You will learn just as much from your classmates as you will from your instructor with an open studio feel. Our class structure is great for beginners or experienced painters and drawers to further their skills! Mediums that can be covered include acrylics, watercolor, oils, graphite, charcoal, pastels, and more! [Min. 4, Max. 10]

Ages 16 and up with special permission.

First day supplies are included. The instructor will provide a supply list at the first class.

**TUESDAYS, 6:00pm - 8:30pm**

**Instructor:** Kimberly Cusack

**Session 1: January 17 – February 21 (6 classes)**

**Reg. Code:** PAD-97

**Session 2: March 7 – April 11 (6 classes)**

**Reg. Code:** PAD-98

**Session 3: April 25 – May 30 (6 classes)**

**Reg. Code:** PAD-99

**THURSDAYS, 6:00pm - 8:30pm**

**Instructor:** Kimberly Cusack

**Session 1: January 19 – February 23 (6 classes)**

**Reg. Code:** PAO-97

**Session 2: March 9 – April 13 (6 classes)**

**Reg. Code:** PAO-98

**Session 3: April 27 – June 1 (6 classes)**

**Reg. Code:** PAO-99

**Cost:** \$100 for Emerge members, \$140 for non-members

**Zoom:** \$80 for Emerge members, \$120 for non-members





# Metal Design & Jewelry

## DAYTIME & EVENING: METALSMITHING BASICS

Create your own unique jewelry with a found object from home or our studio! In this class we will use beginner level stone setting and hand fabrication to create your own jewelry piece. Students are introduced to essential bench tools, workspace, and techniques of a metalsmith or bench jeweler such as sawing, piercing, riveting, texture, and patina. You will learn how to combine several techniques and create a work of art that has meaning to you. No experience needed.

[Min. 4, Max. 7]

Ages 16 and up with special permission.

Supplies are included with the exception of fine metals, such as silver, that students may wish to use in class.

**TUESDAYS, 10:00am - 12:00pm**

**Instructor:** Lisette Fee

**Session 1: January 17 – February 21 (6 classes)**

**Reg. Code: TMD-97**

**Session 2: March 7 – April 11 (5 classes)**

**Reg. Code: TMD-98**

**\*Skipping the week of March 14**

**Session 3: April 25 – May 30 (6 classes)**

**Reg. Code: TMD-99**

**Cost (Session 1 and 3):** \$110 for Emerge members, \$150 for non-members

**Cost (Session 2):** \$95 for Emerge members, \$135 for non-members

**THURSDAYS, 6:00pm - 8:30pm**

**Instructor:** Lisette Fee

**Session 1: January 19 – February 23 (6 classes)**

**Reg. Code: IMD-97**

**Session 2: March 9 – April 13 (6 classes)**

**Reg. Code: IMD-98**

**Session 3: April 27 – June 1 (6 classes)**

**Reg. Code: IMD-99**

**Cost:** \$130 for Emerge members, \$170 for non-members



# Printmaking

## GEL PLATE PAINTING & PRINTING!

Learn how to make colorful art while having fun with this fast and easy hand printing method. All materials are provided. This class is for beginners and for those with more art experience. You will create with printing leaves and other botanical materials, stencils, and with common household objects. Your final creations will make great original hand printed cards and art prints you can frame. No experience needed. [Min. 4, Max. 10]

Ages 16 and up with special permission.

General supplies are included, however students are welcome to bring additional supplies.

**WEDNESDAYS, 1:00pm - 3:00pm**

**Instructor:** Karen Warren (Session 1 and 2), TBA (Session 3)

**Session 1: January 18 – February 22 (6 classes)**

**Reg. Code: GPM-97**

**Session 2: March 8 – April 12 (5 classes)**

**Reg. Code: GPM-98**

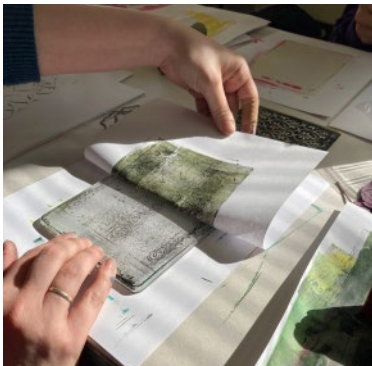
**\*Skipping the week of March 14**

**Session 3: April 26 – May 31 (6 classes)**

**Reg. Code: GPM-99**

**Cost (Session 1 and 3):** \$90 for Emerge members, \$130 for non-members

**Cost (Session 2):** \$75 for Emerge members, \$115 for non-members



# Bookmaking

## INTRO TO BOOKMAKING

Learn the basics of book making! This course will cover a variety of techniques including sewn bindings, folded structures, and using adhesives. Participants will construct both hard cover and soft cover books, books for journaling and sketching, as well as artist books. Tools and some materials provided. No experience needed. [Min. 4, Max. 10]

Ages 16 and up with special permission.

Tools and some materials provided. No experience needed.

**WEDNESDAYS, 6:00pm - 8:30pm**

**Instructor:** Liz Steiner

**Session 1: January 18 – February 22 (6 classes)**

**Reg. Code: ITB-97**

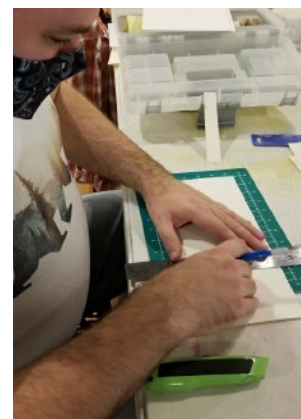
**Session 2: March 8 – April 12 (6 classes)**

**Reg. Code: ITB-98**

**Session 3: April 26 – May 31 (6 classes)**

**Reg. Code: ITB-99**

**Cost:** \$100 for Emerge members, \$140 for non-members





# Daytime Pottery Classes

## DAYTIME POTTER'S WHEEL

This is the perfect class for those interested in learning and perfecting throwing on the potter's wheel. Intro students will learn the basics of wheel throwing while intermediate and advanced students will work with the instructor on problem solving and refining their skills. [Min. 4, Max. 8]  
Ages 16 and up with special permission.

**TUESDAYS, 10:00am - 12:00pm**

**Instructor:** Erika Gibson

**Session 1: January 17 – February 21 (6 classes)**

**Reg. Code: DPW-97**

**Session 2: March 7 – April 11 (5 classes)**

**Reg. Code: DPW-98**

**\*Skipping the week of March 14**

**Session 3: April 25 – May 30 (6 classes)**

**Reg. Code: DPW-99**

**Cost (Session 1 and 3):** \$90 for Emerge members, \$130 for non-members

**Cost (Session 2):** \$75 for Emerge members, \$115 for non-members

Supply fees for all ceramics classes are \$25 per bag of clay and \$20 for the toolkit.  
All glazes and firing are included.

## DAYTIME HANDBUILDING

In this class you will cover the fundamentals necessary for handbuilding such as rolling slabs and coils, using an extruder, and learn how your hands make great tools. In addition, glazing techniques and surface decoration will be covered. Students will learn how to make various seasonal projects, all of which make great handmade gifts for friends and family. [Min. 4, Max. 8]  
Ages 16 and up with special permission.

**THURSDAYS, 1:00pm - 3:00pm**

**Instructor:** Gail Ritzer

**Session 1: January 19 – February 23 (6 classes)**

**Reg. Code: THB-97**

**Session 2: March 9 – April 13 (5 classes)**

**Reg. Code: THB-98**

**\*Skipping the week of March 14**

**Session 3: April 27 – June 1 (6 classes)**

**Reg. Code: THB-99**

**Cost (Session 1 and 3):** \$90 for Emerge members, \$130 for non-members

**Cost (Session 2):** \$75 for Emerge members, \$115 for non-members

Supply fees for all ceramics classes are \$25 per bag of clay and \$20 for the toolkit.  
All glazes and firing are included.





# Evening Pottery Classes

## HANDBUILDING: TO FUNCTION, OR NOT TO FUNCTION?

This 6 week class will focus on introducing handbuilding techniques including slab building, coiling, and pinch pots. You can use these techniques to make something sculptural or something functional to take home. Some previous experience with clay is preferred but not necessary. If you have already taken the Intro to Pottery class and wish to learn about combining your wheel thrown items with some handbuilding techniques, then this class is also for you, however you should be skilled enough to throw on your own. [Min. 4, Max. 8]

Ages 16 and up with special permission.

**TUESDAYS, 6:00pm - 8:30pm**

**Instructor:** TBA (Session 1), Charlotte Fitz-Daniels (Session 2 and 3)

**Session 1: January 17 – February 21 (6 classes)**

**Reg. Code: ACT-97**

**Session 2: March 7 – April 11 (6 classes)**

**Reg. Code: ACT-98**

**Session 3: April 25 – May 30 (6 classes)**

**Reg. Code: ACT-99**

**Cost:** \$100 for Emerge members, \$140 for non-members

Supply fees for all ceramics classes are \$25 per bag of clay and \$20 for the toolkit.  
All glazes and firing are included.

## INTRO TO WHEEL THROWING: MINDFUL MAKING

This introductory class will be a little different. You will learn the fundamentals necessary for throwing cylinder and bowls (including the techniques for centering, opening, pulling, trimming, and glazing), however you will do so while turning your attention to what is happening in your nervous system and intentionally using skills that can bring relief from stress. If you've never tried the potter's wheel but have always wanted to, then this class is for you. If you've thrown on the wheel before but need a refresher or are new to Emerge, then this class is for you too! Class size is restricted so students can get the technical instruction required to establish a good foundation for continued learning. This class is a prerequisite for continuing pottery classes. [Min. 4, Max. 6]

Ages 16 and up with special permission.

**WEDNESDAYS, 6:00pm - 8:30pm**

**Instructor:** Kia Glosson

**Session 1: January 18 – February 22 (6 classes)**

**Reg. Code: IWT-97**

**Session 2: March 8 – April 12 (6 classes)**

**Reg. Code: IWT-98**

**Session 3: April 26 – May 31 (6 classes)**

**Reg. Code: IWT-99**

**Cost:** \$110 for Emerge members, \$150 for non-members

Supply fees for all ceramics classes are \$25 per bag of clay and \$20 for the toolkit.  
All glazes and firing are included

Looking for a discount?

Become a member of Emerge!

Benefits include discounts on classes and workshops.

*Student/Senior • Individual • Family • Donor • Sponsor • Patron • Benefactor*





# Evening Pottery Classes

## CONTINUING POTTER: BEYOND THE BASICS

Continuing students will hone their skills at centering, opening, and pulling during this 6 week class. Projects are designed to help improve the fundamentals necessary for crafting advanced cylinders and bowls. Advanced skills such as increasing scale, pulling spouts, and attaching handles will be addressed to challenge potters who have more wheel experience. Each project will include glazing and surface decoration discussions. This class is project driven and will allow students to take home several functional pieces! Introduction to Wheel Throwing is a prerequisite to this class. [Min. 4, Max. 8] Ages 16 and up with special permission.

**THURSDAYS, 6:00pm - 8:30pm**

**Instructor:** Erika Gibson

**Session 1: January 19 – February 23 (6 classes)**

**Reg. Code: CPW-97**

**Session 2: March 9 – April 13 (6 classes)**

**Reg. Code: CPW-98**

**Session 3: April 27 – June 1 (6 classes)**

**Reg. Code: CPW-99**

**Cost:** \$100 for Emerge members, \$140 for non-members

Supply fees for all ceramics classes are \$25 per bag of clay and \$20 for the toolkit. All glazes and firing are included.

## Pottery Clubs

Membership to **THE FIRING CIRCLE** and **MUDHOLE** is open to all current and previously enrolled students taking classes through our pottery program. You also have to be approved by the current Pottery Coordinator for admission. If you have not taken a pottery class through Emerge, you must first enroll in the Clay Studio Orientation Class prior to joining a Pottery Club. Those who have not previously taken a class with Emerge will be able to request a Clay Studio Orientation Class depending on availability and space for the program. Email Heather Suter at [education@emergegallery.com](mailto:education@emergegallery.com) for approval.

### THE FIRING CIRCLE

Members of the Firing Circle are paying only for the use of the kiln facilities. They are not eligible for use of the pottery facility including wheels, tables, equipment, etc. This is simply a club for those individuals who wish to create and work on their artwork off site, but need kiln usage. Clay and glazes are not included. Clay may be purchased at class rates. Clay not purchased at Emerge is not permitted. Dues run on a 6 month basis. Members pay for firing by drying room shelf load (shelves are approximately 12" x 36").

6 Month Membership Rates: \$25 for Emerge members, \$65 for non-members

Firing Rates: \$15 per drying room shelf

### MUDHOLE

Mudhole membership entitles you to use our facilities any time during our open hours, whether you are currently enrolled in a class or not, the ability to purchase clay at class rates, use of glazes, and your work will be fired through our facility.

1 month Membership Rates: \$40 for Emerge (members only)

3 Month Membership Rates: \$105 for Emerge members, \$145 for non-members

6 Month Membership Rates: \$180 for Emerge members, \$220 for non-members.



# Private Lessons



Private lessons are available in all areas. These hands-on lessons are taught in the one-on-one format with the instructor demonstrating, then letting the student "try it". Class dates and times are scheduled by the student and instructor's mutual agreement.

Call Heather Suter at Emerge (252) 551-6947 or e-mail at [education@emergegallery.com](mailto:education@emergegallery.com) for more information and to schedule.

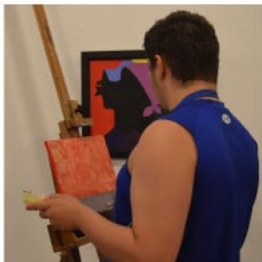
Cost: \$150 for members, \$190 for non-members (4 one hour lessons)

Bring a friend: two people for \$100 each, three or more \$75 each - 4 one hour lessons.

Need only one lesson? Schedule by the hour – one person for \$40 an hour, two or more people \$35 an hour per person (members only).

Depending on the type of lesson, some materials or a material fee may be required. Ask for more information.

## SPRING BREAK *art camp* MARCH 13-17, 2023





# Family Workshops

Spend a little quality time with the ones you love by creating something together! We invite a big person and a little person to create art side by side. These two hour workshops provide a fun and rewarding time for parents, grandparents, big brothers and big sisters to work with a young person while exploring new materials and creating projects as a team.

## ADDITIONAL WORKSHOP INFORMATION

- All students, instructors, and staff are encouraged to wear a face mask in classroom settings.
- Emerge asks that if anyone in your household is sick or showing signs of becoming sick, that you do not attend class.
- Individuals requesting accommodation under the Americans with Disabilities Act (ADA) should contact the Programs Director at paula@emergegallery.com prior to the start of class.

**Cost:** \$40 for Emerge members,  
\$60 for non-members (1 adult, 1 child)  
\$10 each for additional person

## HEART THEMED CARDS

(Children Ages 3+ and an Adult)

Come make handmade valentines with us! During this workshop we will be creating heart themed cards with each being a unique as a finger print. We will be using our fingers and other print making methods to make cards that express our love for others! [Min. 4, Max. 12]

**Date:** Sunday, January 22

**Time:** 1:30pm - 3:30pm

**Reg Code:** FWS-94

**Instructor:** Kimberly Cusack

## POTTER'S WHEEL

(Children Ages 3+ and an Adult)

Participants will learn the basics of working on the potter's wheel. They will learn to center and pull the clay to make a simple form. Participants will choose one or two of their best attempts to keep, and return to pick up their pots after they have been glazed. [Min. 4, Max. 10]

**Date:** Sunday, February 26

**Time:** 1:30pm - 3:30pm

**Reg Code:** FWS-95

**Instructor:** Heather Suter

## FELT SOAP

(Children Ages 6+ and an Adult)

Felted Soap is a fun addition to your bathroom or to give as a gift. In this workshop, you will learn how to felt a covering over a bar of soap. After combining your chosen colors of felt they turn out exquisite, unique, and bright. [Min. 4, Max. 12]

**Date:** Sunday, March 26

**Time:** 1:30pm - 3:30pm

**Reg Code:** FWS-96

**Instructor:** Sienna Zylis

## COLLAGE FAMILY FACE MASH UP

(Children Ages 3+ and an Adult)

Capture the likeness of yourself and your child. During this workshop you will be working together to create one self portrait using your face to create one. You will be experimenting with two collage styles: papier collé and photomontage. By the end of the workshop, you will be able to take home one self portrait created by two halves. [Min. 4, Max. 12]

**Date:** Sunday, April 23

**Time:** 1:30pm - 3:30pm

**Reg Code:** FWS-97

**Instructor:** Kimberly Cusack

## SILK SCARVES

(Children Ages 6+ and an Adult)

Silk scarf painting is a very unique craft that has been around for centuries. The resist and inks used soak into the silk and provide ample opportunities to try different techniques and patterns. You and your child will get one scarf to share and come up with a unique combined pattern. [Min. 4, Max. 10]

**Date:** Sunday, May 14

**Time:** 1:30pm - 3:30pm

**Reg Code:** FWS-98

**Instructor:** TBA





# Art is Good Medicine

## Create, Heal, Grow

Create, Heal, Grow is part of our Art is Good Medicine program. This program is an Arts in Healthcare program in partnership with local healthcare providers such as ECU Health and McConnell-Raab Hope Lodge. Professional visual artists work with adult cancer patients and survivors and pediatric patients. By bringing artistic aspects into the lives of these individuals this program helps to provide a holistic approach for coping by engaging their mind, body, and health for overall well-being. In addition, Emerge Gallery and Art Center, Home of the Pitt County Arts Council, offers free adult workshops to individuals living with a health disability or disease, their family, and/or caregivers.

### ADDITIONAL WORKSHOP INFORMATION

- All students, instructors, and staff are encouraged to wear a face mask in classroom settings.
- Emerge asks that if anyone in your household is sick or showing signs of becoming sick, that you do not attend class.
- Individuals requesting accommodation under the Americans with Disabilities Act (ADA) should contact the Programs Director at [paula@emergegallery.com](mailto:paula@emergegallery.com) prior to the start of class.

Although this workshop is **free**, participants must pre-register.

There are two ways to register:

1. Online at [www.emergegallery.com](http://www.emergegallery.com) under the Education and Classes tab.
2. At our facility by filling out a registration form at the front desk.

---

### HANDBUILDING: WARM MUG

A person is able to model, touch, feel, roll, and even pound on clay making it a therapeutic tool. De-stress, create, and explore with us as we form a mug and decorate its surface. [Min. 4, Max. 12]

**Date: Thursday, January 26**

**Time: 6:30pm - 8:00pm**

**Instructor: TBA**

### PRINTMAKING

The act of doodling, whether mindless or purposeful, can be a great stress reliever. This workshop will incorporate that into a printmaking technique to reproduce designs onto cards. [Min. 4, Max. 12]

**Date: Thursday, February 23**

**Time: 6:30pm - 8:00pm**

**Instructor: TBA**

### MANDALAS

Within its circular shape, the mandala has the power to promote relaxation, balance the body's energies, enhance your creativity, and support healing. We are going to take the time to purposely place paint into a brilliant pattern. [Min. 4, Max. 12]

**Date: Thursday, March 30**

**Time: 6:30pm - 8:00pm**

**Instructor: Kimberly Cusack**

### HANDBUILDING: SMALL FLOWER POT

A person is able to model, touch, feel, roll, and even pound on clay making it a therapeutic tool. De-stress, create, and explore with us as we form a small flower pot and decorate its surface. [Min. 4, Max. 12]

**Date: Thursday, May 25**

**Time: 6:30pm - 8:00pm**

**Instructor: TBA**





# Sip, Savor & Create Workshops

Make plans to join us for Emerge's Adult Workshop Series that uses artistic fun as a great excuse to have a night out! Grab your friends and join us for a wonderful art project while enjoying a glass of wine! No experience is necessary, but a willingness to have fun is!

All supplies are included. Please feel free to bring a beverage of your choice.

\*Must be 21 or over to register.  
(Beer and wine are welcome. No liquor please.)

**We provide:**

All the art supplies  
A great art instructor

**You need to bring:**

You!  
Friends!  
Brown bagged items such as beer or wine if you wish.

**ADDITIONAL WORKSHOP INFORMATION**

- All students, instructors, and staff are encouraged to wear a face mask in classroom settings.
- Emerge asks that if anyone in your household is sick or showing signs of becoming sick, that you do not attend class.
- Individuals requesting accommodation under the Americans with Disabilities Act (ADA) should contact the Programs Director at [paula@emergegallery.com](mailto:paula@emergegallery.com) prior to the start of class.

**Cost:** \$40 for Emerge members, \$60 for non-members

\*Discount of \$10 for second enrollment for members in the same household.

---

## GEL PLATE PRINTING & PAINTING

Learn how to make colorful art while having fun with this fast and easy hand printing method. All materials are provided. This class is for beginners and for those with more art experience. You will create with printing leaves and other botanical materials, stencils, and with common household objects. No experience needed. [Min. 4, Max. 12]

**Date:** Friday, January 20

**Time:** 6:30pm - 8:30pm

**Reg. Code:** WND-94

**Instructor:** Alex Chisler

## POTTER'S WHEEL

Come visit our studio to center clay and help center yourself! It's been a tough week, so sign up to have a creative release while enjoying friends and glass of wine at Emerge. This is a great opportunity to try out the potter's wheel and maybe find a new hobby you will enjoy. [Min. 4, Max. 10]

**Date:** Friday, February 17

**Time:** 6:30pm - 8:30pm

**Reg. Code:** WND-95

**Instructor:** Erika Gibson



## PAPERMAKING

In this workshop you will be learning the process of making paper. We will make paper pulp from recycled materials and experiment with adding inclusions, such as flowers, plants, threads, personal effects (old letters or fabrics, torn memorabilia) and other eye-catching items, into our paper. Participants wanting further exploration will learn how to wet emboss their handmade paper using textured materials as well as how to create 3-Dimensional paper objects using common household or personal objects as molds. All experience levels are welcome. [Min. 4, Max. 10]

**Although materials will be provided, you can personalize the experience and bring the following:**

- For making paper pulp: old jeans, colored/raw cotton fabrics, colored or scrap paper
- For inclusions: any material you find interesting and would like to see in your handmade paper, such as colored materials and textures you find visually engaging, flower petals, plants, leaves, string, memorabilia you don't mind getting wet (old letters, torn book pages, poems, handwritten things...flower petals, fabric scraps, leaves, string, bits of thread). I play will old handwritten letters, torn pages from books, vintage fibers, wool, plant debris and trash I find visually engaging.
- For embossing: textures (plastics, metals and glass work best)
- For molds: personal and household objects (plastics, metals, and glass work best)

**Date: Friday, March 25**

**Time: 6:30pm - 8:30pm**

**Reg. Code: WND-96**

**Instructor: Noelle Gunn**

## BOOKMAKING

Participants will get to learn basic bookbinding skills and how to handcraft a book using the long stitch binding technique. Bring home the finished product and use it as a notebook, sketchbook or gift it to a loved one. No experience is necessary, but a willingness to have fun is! [Min. 4, Max. 12]

**Date: Friday, April 21**

**Time: 6:30pm - 8:30pm**

**Reg. Code: WND-97**

**Instructor: Liz Steiner**

## ENAMELED JEWELRY

In this workshop, you will be exposed to a variety of enameling techniques to create colorful wearable jewelry. Enameling is a process of fusing powdered glass to metal by firing in a small kiln. Enamel jewelry is a perfect way to add color and even an artistic look to your piece without the need for gemstones. [Min. 4, Max. 8]

**Date: Friday, May 19**

**Time: 6:30pm - 8:30pm**

**Reg. Code: WND-98**

**Instructor: Liz Steiner**

**FOLLOW US ON SOCIAL MEDIA:**



@PittCountyArtsCouncil



@pittcountyarts



@pittcountyarts





# Registration Form

Student's First Name: \_\_\_\_\_ Student's Last Name: \_\_\_\_\_

Address: \_\_\_\_\_ City: \_\_\_\_\_ State: \_\_\_\_\_ Zip: \_\_\_\_\_

Phone (home): \_\_\_\_\_ Phone (cell): \_\_\_\_\_

E-Mail: \_\_\_\_\_

Emergency Contact Information: \_\_\_\_\_

Relationship: \_\_\_\_\_ Phone: \_\_\_\_\_

If you have a disability and may require accommodations in order to fully participate, please indicate here:

How would you like to be contacted to discuss your needs: \_\_\_\_\_

Below must be completed if student is under 18 years of age:

Child's Age: \_\_\_\_\_ Birthday: \_\_\_\_\_ Grade: \_\_\_\_\_ School: \_\_\_\_\_

1st Parent/Guardian's Name: \_\_\_\_\_

2nd Parent/Guardian's Name: \_\_\_\_\_

Does your child have any allergies or medical conditions we should be aware of? (Please list below.)

Are you (or your child) a member of the Emerge Gallery & Art Center?: Yes \_\_\_\_\_ No \_\_\_\_\_

Do you agree to Emerge Gallery & Art Center photographing you or your child and using it in promotional materials (web, print, etc) and social media (facebook, twitter, instagram, etc)? Yes \_\_\_\_\_ No \_\_\_\_\_

Class Name:	Registration Code:	Amount:
1.		
2.		

**WAIVER OF LIABILITY:** In consideration for Emerge Gallery & Art Center making programs available to myself or my child, I here-by release Emerge Gallery & Art Center, its employees, volunteers, instructors, and agents from any and all liability, cost/expense associated with any injury or illness that I or my child may sustain while participating in any of the programs and activities. I voluntarily agree to assume all of the foregoing risks and accept sole responsibility for any injury to myself (including, but not limited to, personal injury, disability, and death), illness, damage, loss, claim, liability, or expense, of any kind, that I may experience or incur in connection with me or my child's attendance at Emerge Gallery & Art Center or participation in Emerge Gallery & Art Center programming. In case I cannot be reached in an Emergency, I give my permission to the Emerge Gallery & Art Center to select proper Emergency care and treatment for my child or myself. Furthermore, I hereby hold Emerge Gallery & Art Center, its employees, volunteers, instructors, and agents harmless for any damage, loss, or claims to my person, child, or property. I understand that payment must be made in full. I agree to the refund policy stated in the class booklet in the event of a refund request. Refunds are possible up to one week prior to class. No refunds 5 days prior.

Signature: \_\_\_\_\_ Date: \_\_\_\_\_

If under 18 years of age must be signature of Parent or Legal Guardian.

## Please remember to mark your calendar!

With questions and/or for enrollment information, please contact Heather Suter, Education Coordinator, at [education@emergegallery.com](mailto:education@emergegallery.com).

Emerge Gallery & Art Center | 404 Evans Street Greenville, NC 27858 | (252) 551-6947 | [www.emergegallery.com](http://www.emergegallery.com)